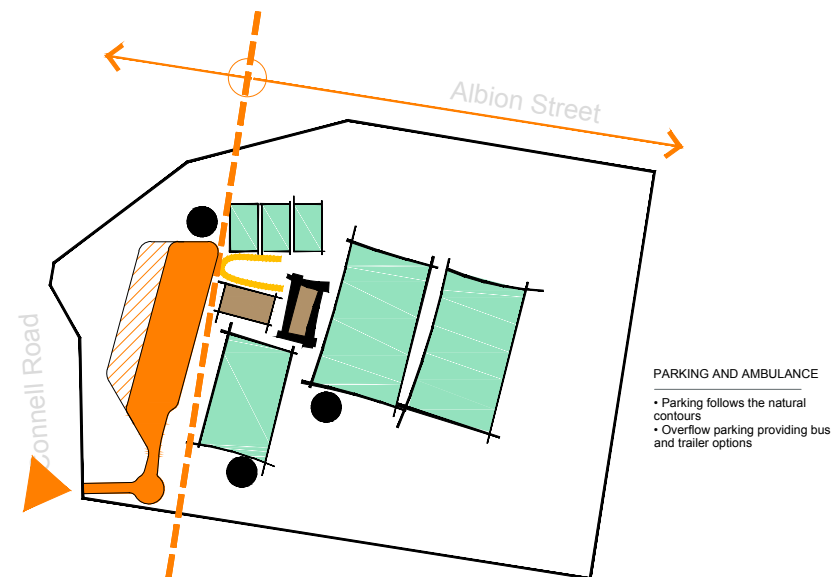
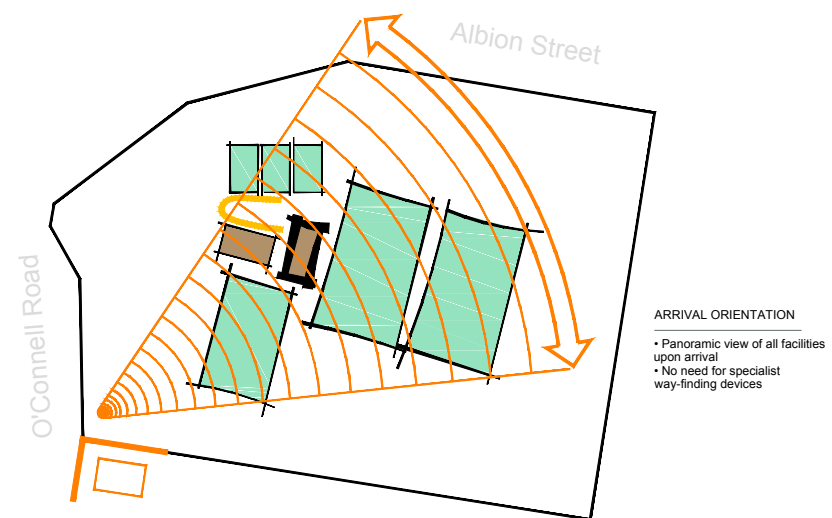
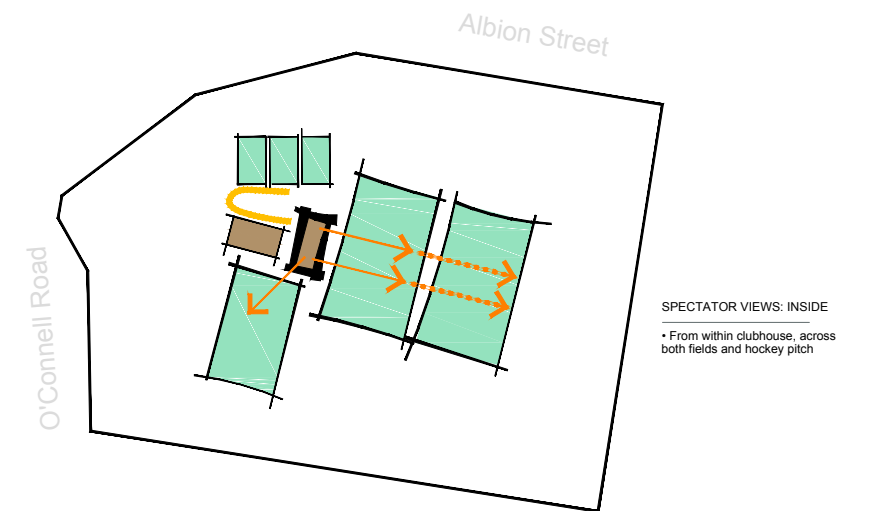
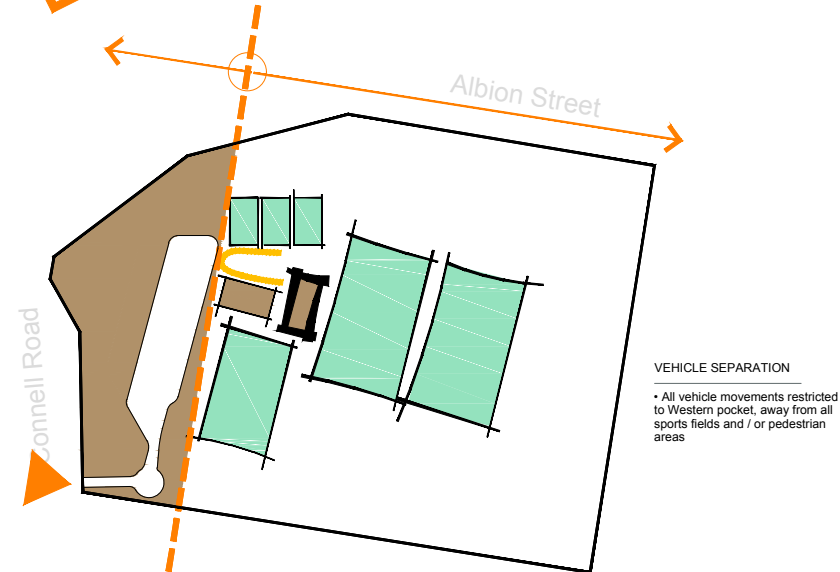
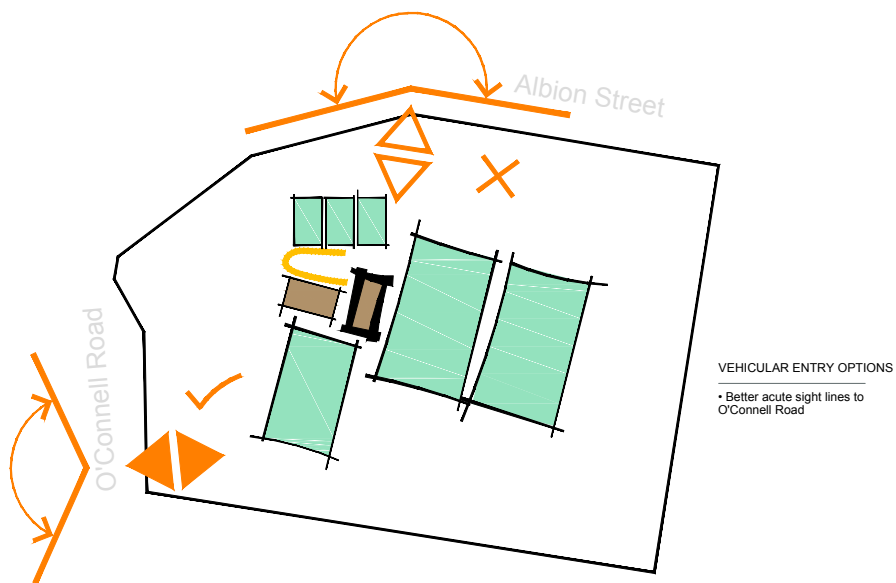
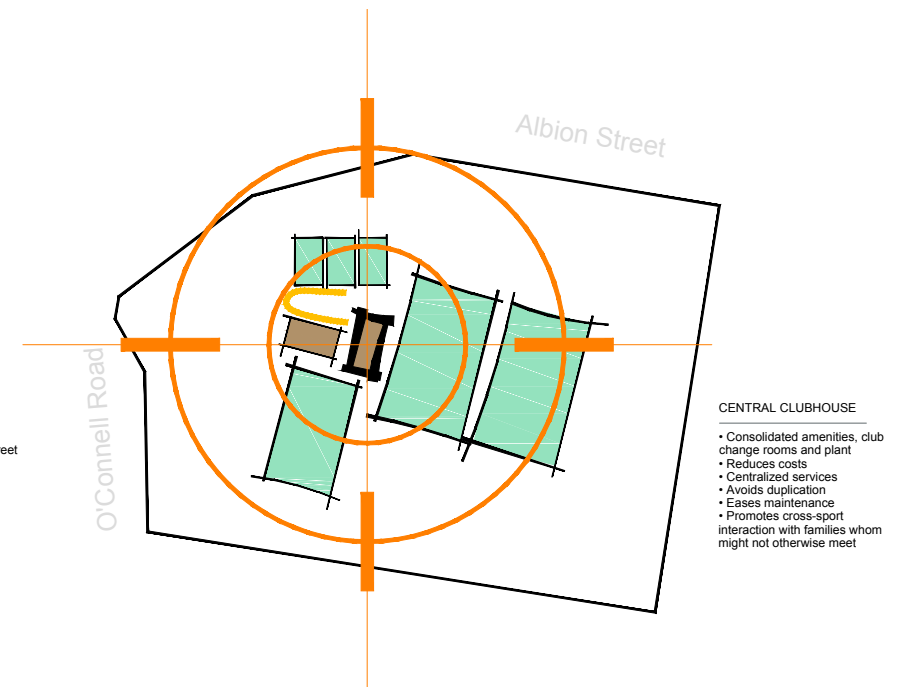
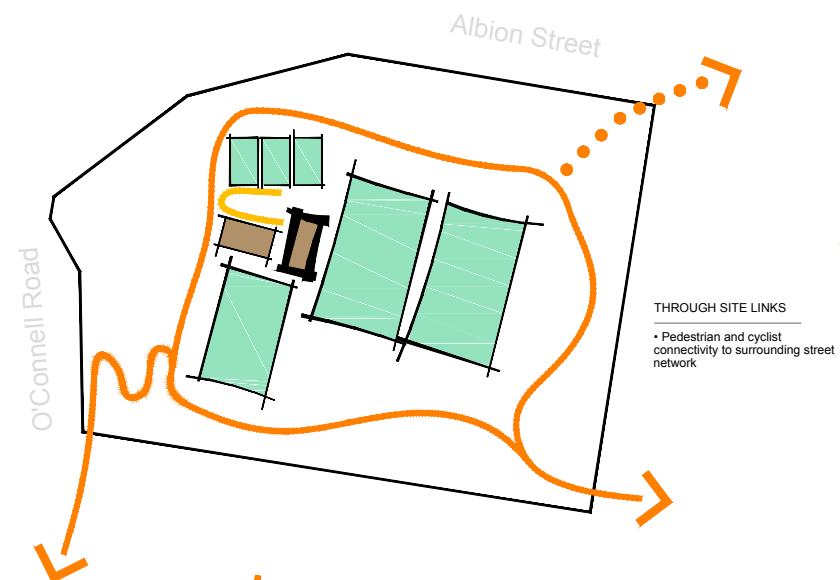
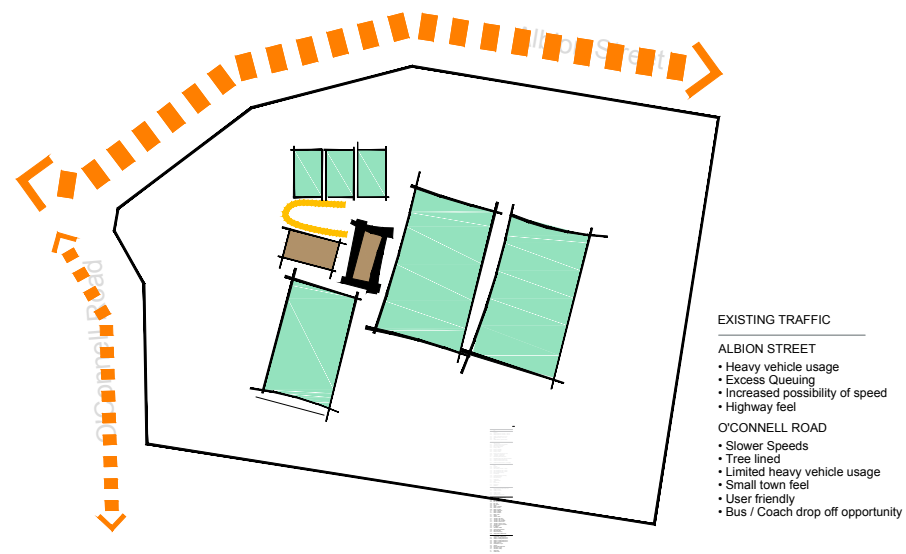
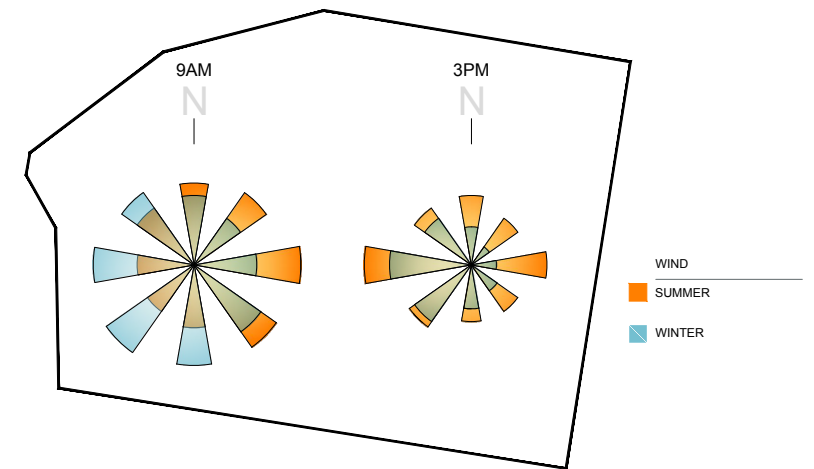
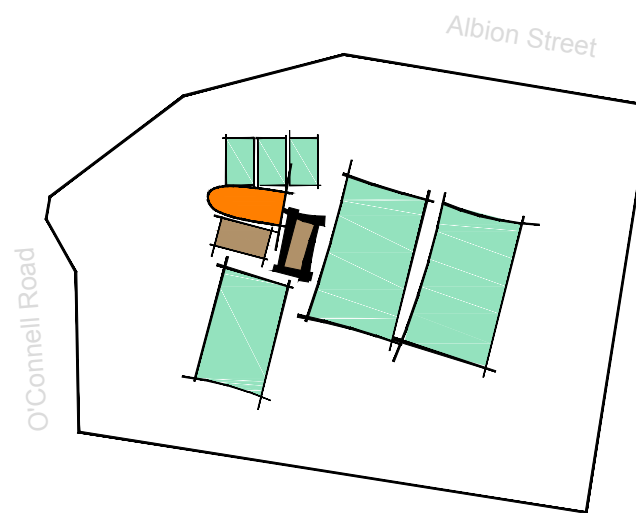
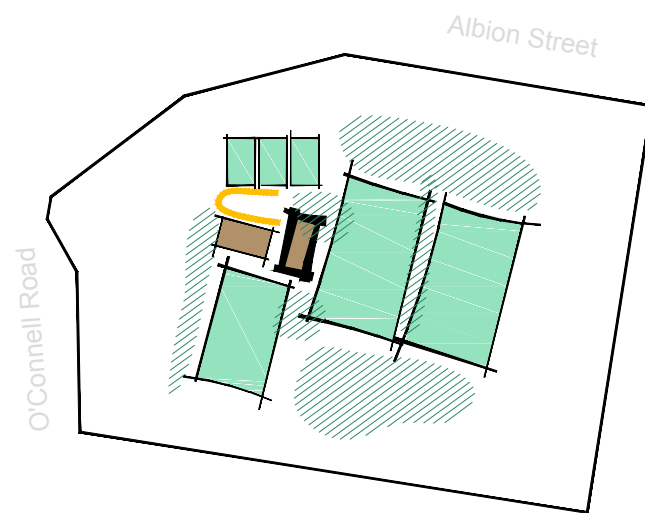
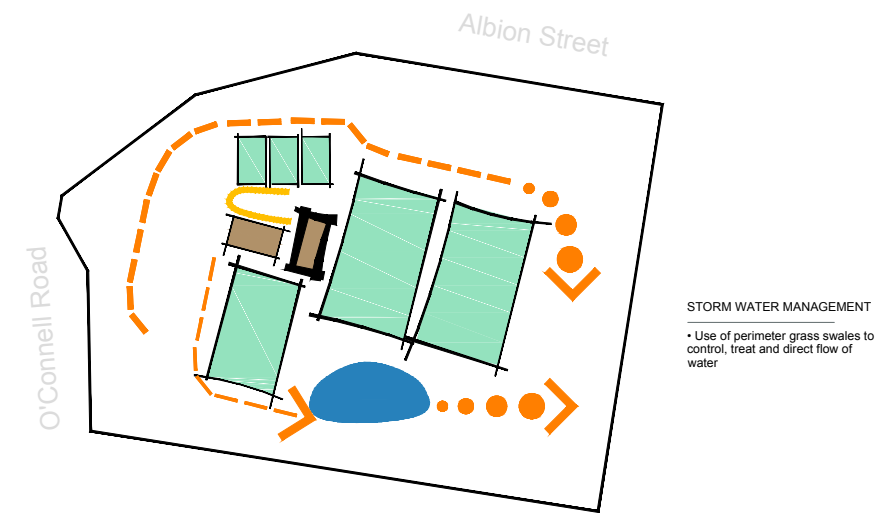
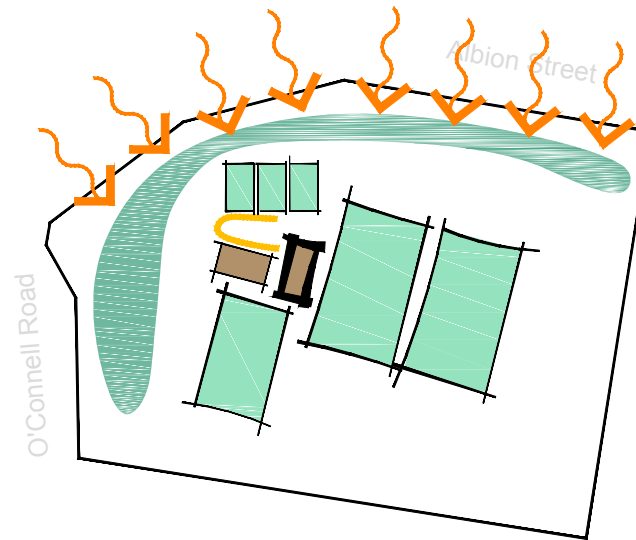
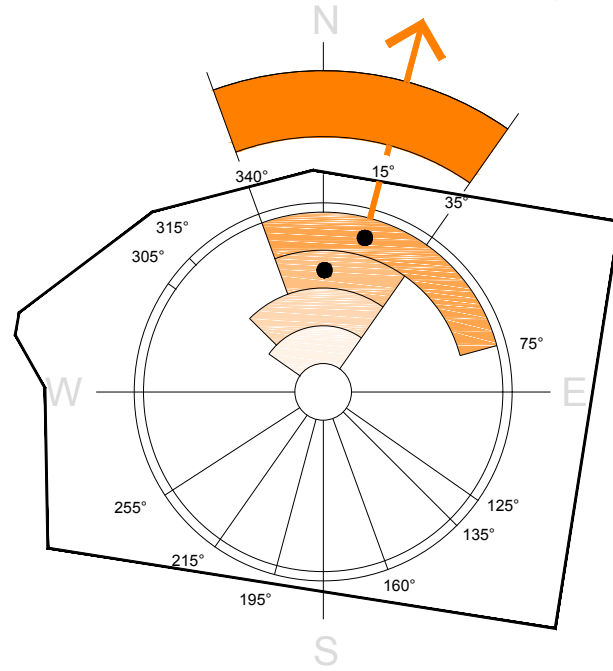
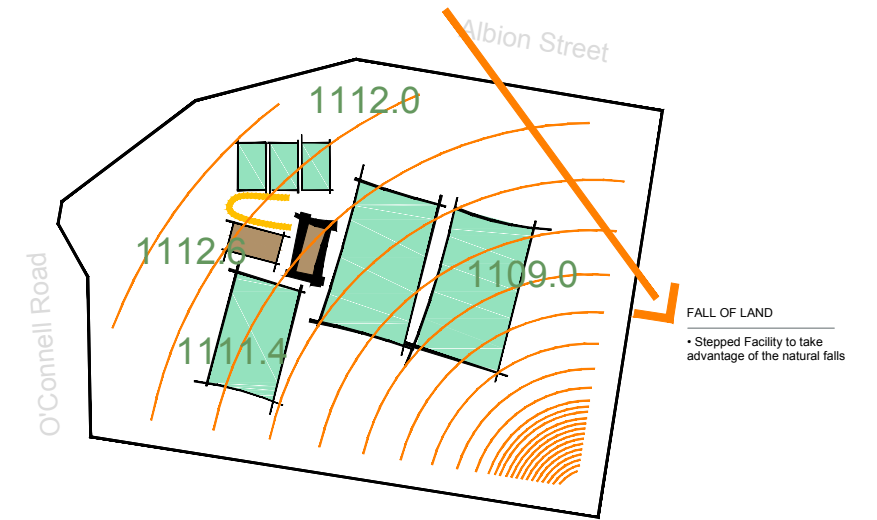
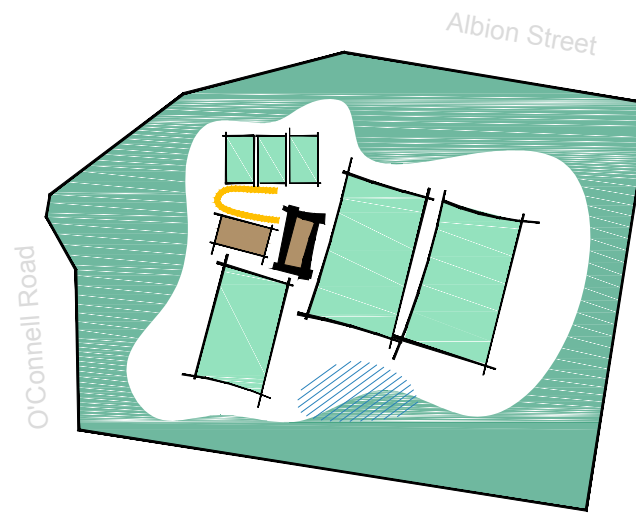
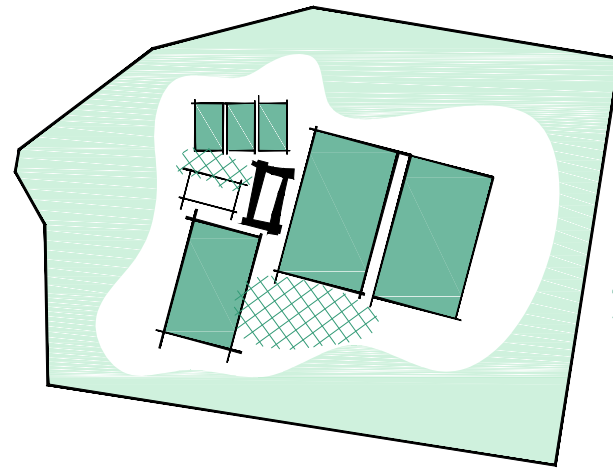


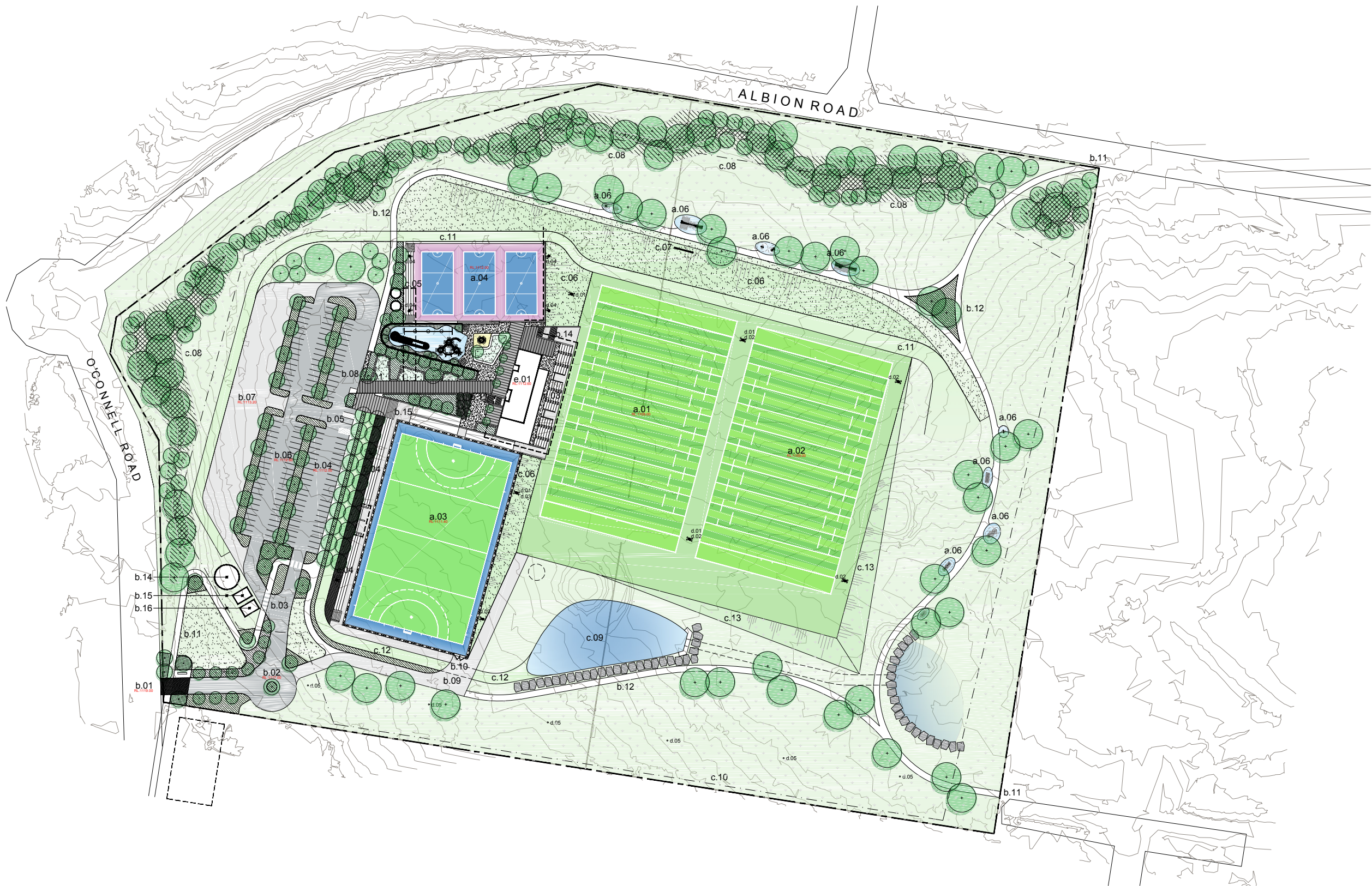
Oberon Sports Complex

CONCEPT

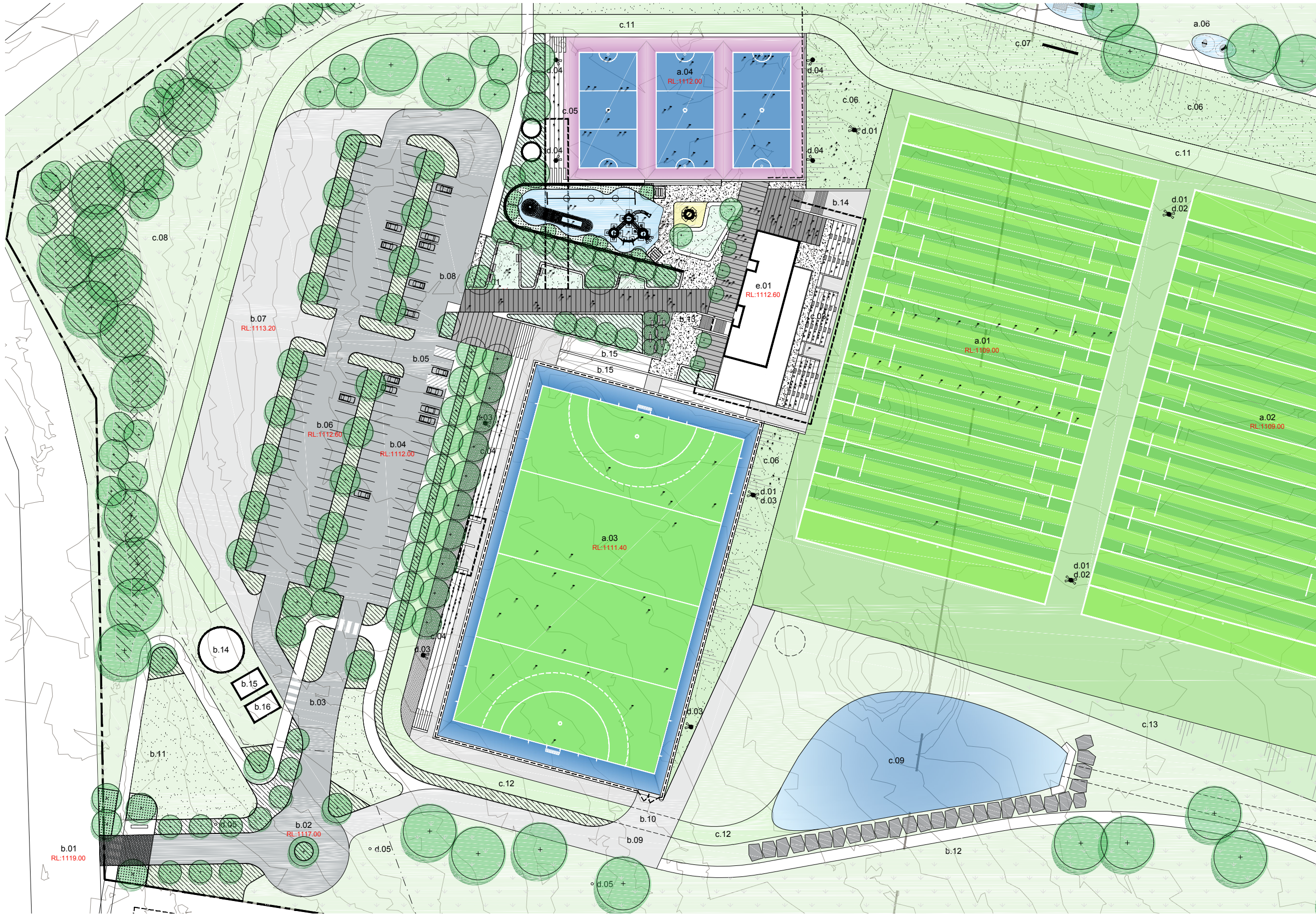




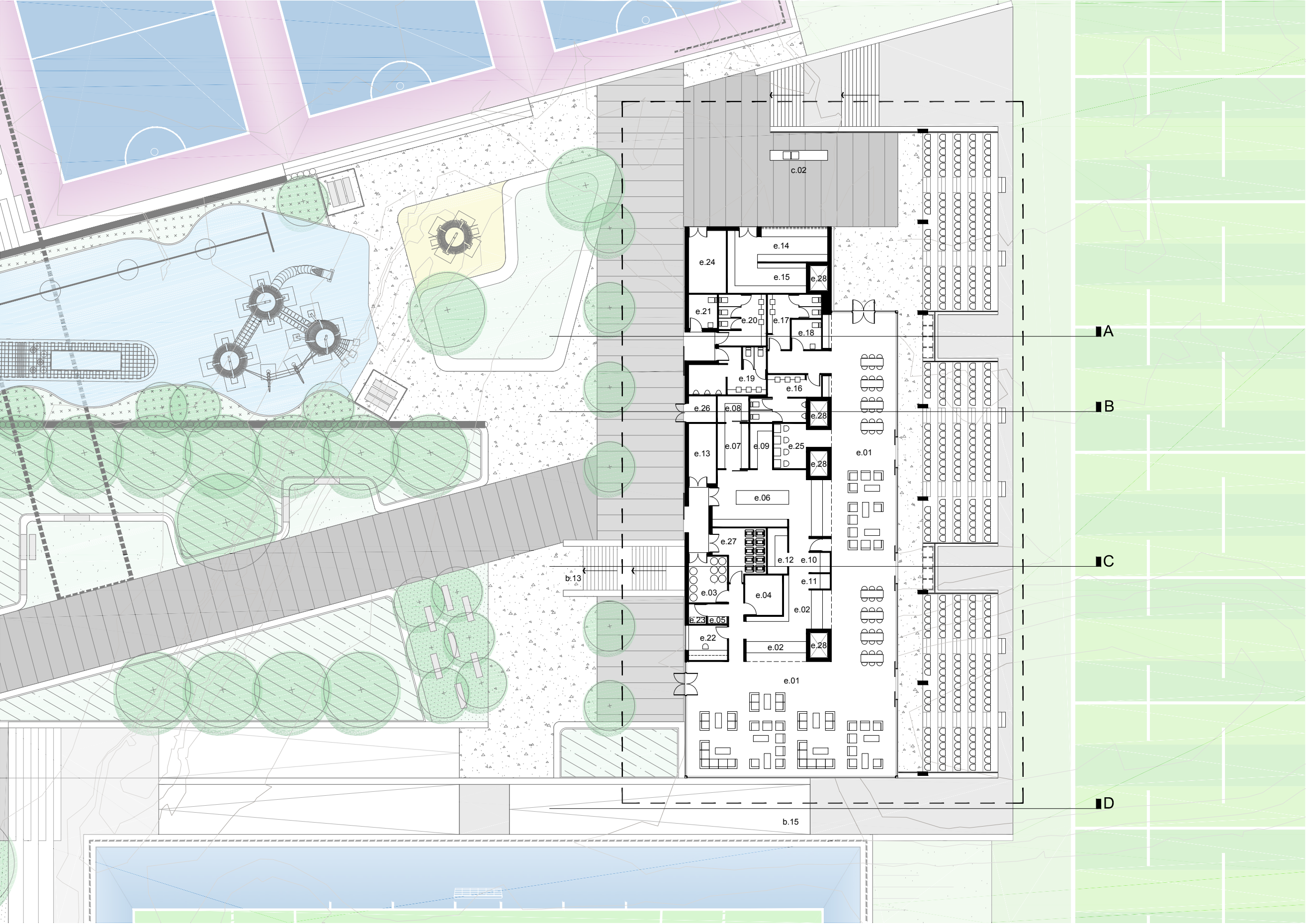




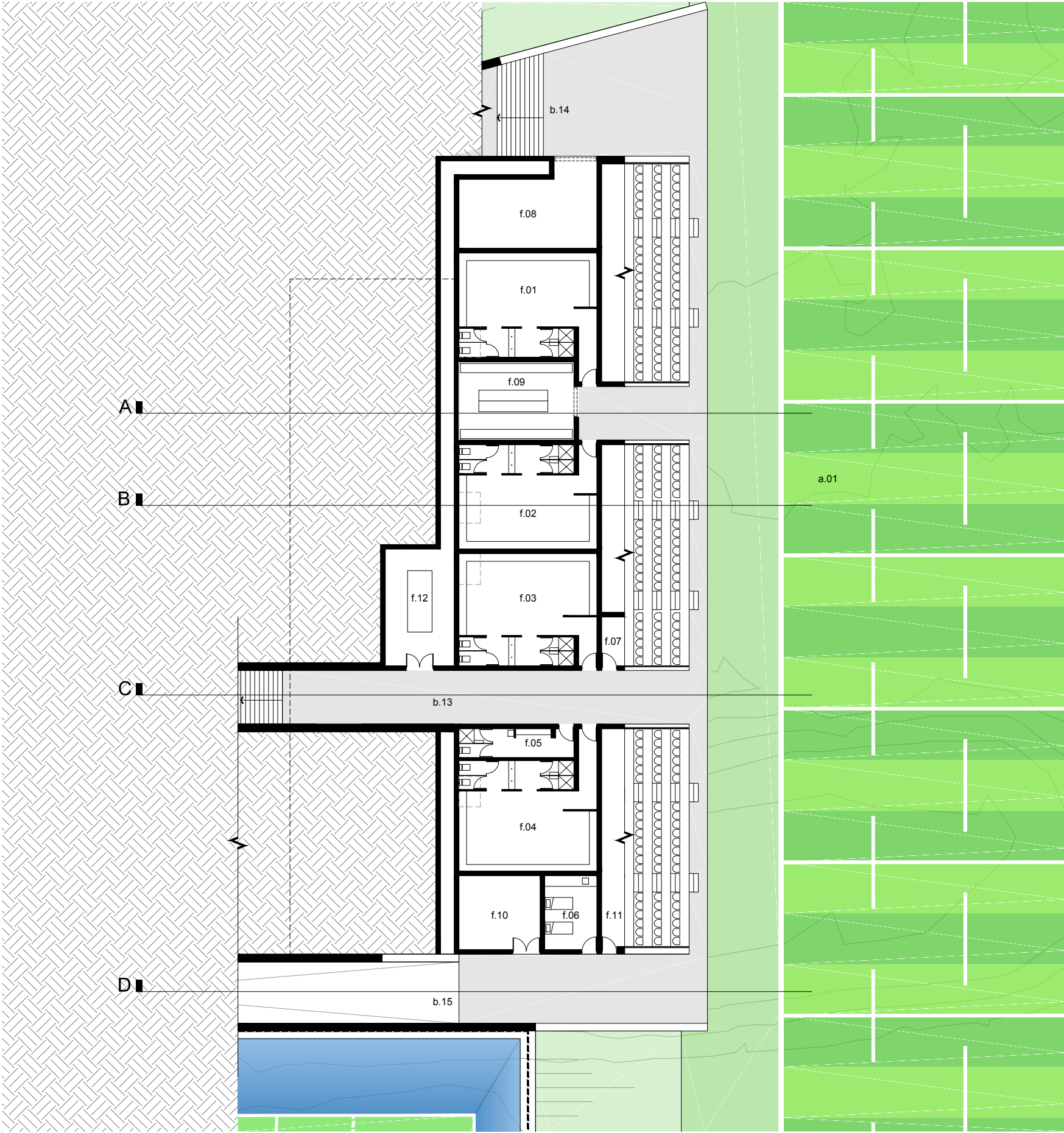
KEY	
SPORTS	
a.01	Rugby League field - Ground 1 - 100 x 68
a.02	Rugby League field - Ground 2 - 100 x 68
a.03	Hockey - Wet Synthetic - 91.4 x 55
a.04	Netball Court array - 30 x 15.5 ea
a.05	Play
a.06	Fitness Stations - perimeter course
CIRCULATION	
b.01	Vehicular Entry off O'Connell Road
b.02	Road Reserve Cull-de-sac
b.03	Entry (Ticketing Option)
b.04	Parking - Primary
b.05	Parking - Accessible
b.06	Parking - Secondary
b.07	Parking - Overflow
b.08	Parking - Kiss + Drop (Dump + Run)
b.09	Ambulance - access routes
b.10	Ambulance - gated access
b.11	Pedestrian/cyclist access points
b.12	Pedestrian/cyclist on-site peripheral circulation
b.13	Ground & lower level access - race
b.14	Ground & lower level access - stairs
b.15	Ground & lower level access - 1:20 ramping
SITE	
c.01	Forecourt
c.02	Sundeck / BBQ
c.03	Tiered seating - Ground 1 - League
c.04	Tiered spectator structure - Hockey
c.05	Tiered spectator structure - Netball
c.06	Banks - Spectator Viewing
c.07	Scoreboard(s)
c.08	Landscaped perimeter mounding
c.09	Bio Retention Swales
c.10	Perimeter Fencing
c.11	Grass Swale
c.12	Vegetated Swale
c.13	Bank
c.14	Sprinkler Tank
c.15	Pump Room
c.16	Substation
SITE SERVICES INFRASTRUCTURE	
d.01	Lighting - Ground 1
d.02	Lighting - Ground 2
d.03	Lighting - Hockey
d.04	Lighting - Netball
d.05	Road Reserve power poles
CLUBHOUSE - UPPER LEVEL	
e.01	Club
e.02	Bar
e.03	Bar - Keg Room
e.04	Bar - Store
e.05	Bar - Post Mix
e.06	Kitchen
e.07	Kitchen - Cool Room
e.08	Kitchen - Freezer
e.09	Kitchen - Dry Store
e.10	Kitchen - Glass Wash
e.11	Kitchen - Ice Maker
e.12	Kitchen - Dishwash
e.13	Kitchen - Plant
e.14	Canteen
e.15	Canteen - Stores
e.16	Amenities - Club - Male
e.17	Amenities - Club - Female
e.18	Amenities - Club - Accessible
e.19	Amenities - Precinct - Male
e.20	Amenities - Precinct - Female
e.21	Amenities - Precinct - Accessible
e.22	Managers Office
e.23	IT Cupboard
e.24	Club Stores - Netball
e.25	Licensed Gaming Machines
e.26	Main Switch Room
e.27	Refuse and Recycling
e.28	Change Room Ventilation Voids
CLUBHOUSE - LOWER LEVEL	
f.01	Change 1 - Including shower and wc
f.02	Change 2 - Including shower and wc
f.03	Change 3 - Including shower and wc
f.04	Change 4 - Including shower and wc
f.05	Change - Referees
f.06	First Aid Room / Physio
f.07	Cleaners
f.08	Sports and field maintenance
f.09	Club Stores - League
f.10	Club Stores - Hockey
f.11	Hockey plant
f.12	Grease Arrestor



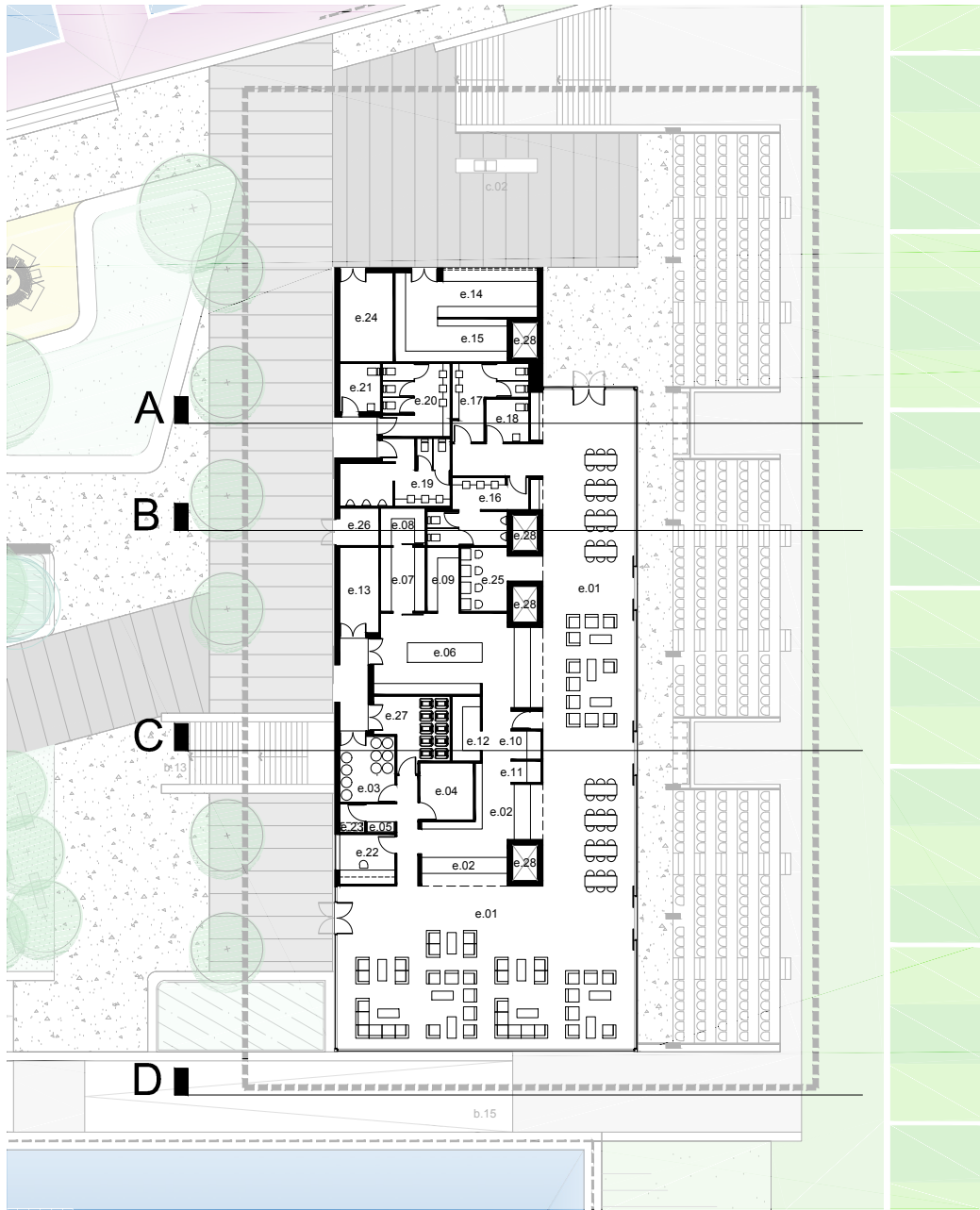
KEY	
SPORTS	
a.01	Rugby League field - Ground 1 - 100 x 68
a.02	Rugby League field - Ground 2 - 100 x 68
a.03	Hockey - Wet Synthetic - 91.4 x 55
a.04	Netball Court array - 30 x 15.5 ea
a.05	Play
a.06	Fitness Stations - perimeter course
CIRCULATION	
b.01	Vehicular Entry off O'Connell Road
b.02	Road Reserve Cull-de-sac
b.03	Entry (Ticketing Option)
b.04	Parking - Primary
b.05	Parking - Accessible
b.06	Parking - Secondary
b.07	Parking - Overflow
b.08	Parking - Kiss + Drop (Dump + Run)
b.09	Ambulance - access routes
b.10	Ambulance - gated access
b.11	Pedestrian/cyclist access points
b.12	Pedestrian/cyclist on-site peripheral circulation
b.13	Ground & lower level access - race
b.14	Ground & lower level access - stairs
b.15	Ground & lower level access - 1:20 ramping
SITE	
c.01	Forecourt
c.02	Sundeck / BBQ
c.03	Tiered seating - Ground 1 - League
c.04	Tiered spectator structure - Hockey
c.05	Tiered spectator structure - Netball
c.06	Banks - Spectator Viewing
c.07	Scoreboard(s)
c.08	Landscaped perimeter mounding
c.09	Bio Retention Swales
c.10	Perimeter Fencing
c.11	Grass Swale
c.12	Vegetated Swale
c.13	Bank
c.14	Sprinkler Tank
c.15	Pump Room
c.16	Substation
SITE SERVICES INFRASTRUCTURE	
d.01	Lighting - Ground 1
d.02	Lighting - Ground 2
d.03	Lighting - Hockey
d.04	Lighting - Netball
d.05	Road Reserve power poles
CLUBHOUSE - UPPER LEVEL	
e.01	Club
e.02	Bar
e.03	Bar - Keg Room
e.04	Bar - Store
e.05	Bar - Post Mix
e.06	Kitchen
e.07	Kitchen - Cool Room
e.08	Kitchen - Freezer
e.09	Kitchen - Dry Store
e.10	Kitchen - Glass Wash
e.11	Kitchen - Ice Maker
e.12	Kitchen - Dishwash
e.13	Kitchen - Plant
e.14	Canteen
e.15	Canteen - Stores
e.16	Amenities - Club - Male
e.17	Amenities - Club - Female
e.18	Amenities - Club - Accessible
e.19	Amenities - Precinct - Male
e.20	Amenities - Precinct - Female
e.21	Amenities - Precinct - Accessible
e.22	Managers Office
e.23	IT Cupboard
e.24	Club Stores - Netball
e.25	Licensed Gaming Machines
e.26	Main Switch Room
e.27	Refuse and Recycling
e.28	Change Room Ventilation Voids
CLUBHOUSE - LOWER LEVEL	
f.01	Change 1 - Including shower and wc
f.02	Change 2 - Including shower and wc
f.03	Change 3 - Including shower and wc
f.04	Change 4 - Including shower and wc
f.05	Change - Referees
f.06	First Aid Room / Physio
f.07	Cleaners
f.08	Sports and field maintenance
f.09	Club Stores - League
f.10	Club Stores - Hockey
f.11	Hockey plant
f.12	Grease Arrestor



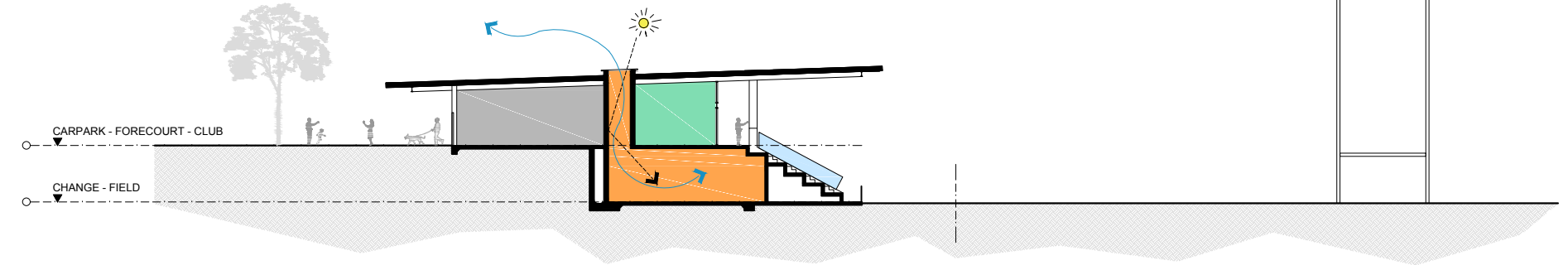
KEY	
SPORTS	
a.01	Rugby League field - Ground 1 - 100 x 68
a.02	Rugby League field - Ground 2 - 100 x 68
a.03	Hockey - Wet Synthetic - 91.4 x 55
a.04	Netball Court array - 30 x 15.5 ea
a.05	Play
a.06	Fitness Stations - perimeter course
CIRCULATION	
b.01	Vehicular Entry off O'Connell Road
b.02	Road Reserve Cull-de-sac
b.03	Entry (Ticketing Option)
b.04	Parking - Primary
b.05	Parking - Accessible
b.06	Parking - Secondary
b.07	Parking - Overflow
b.08	Parking - Kiss + Drop (Dump + Run)
b.09	Ambulance - access routes
b.10	Ambulance - gated access
b.11	Pedestrian/cyclist access points
b.12	Pedestrian/cyclist on-site peripheral circulation
b.13	Ground & lower level access - race
b.14	Ground & lower level access - stairs
b.15	Ground & lower level access - 1:20 ramping
SITE	
c.01	Forecourt
c.02	Sundeck / BBQ
c.03	Tiered seating - Ground 1 - League
c.04	Tiered spectator structure - Hockey
c.05	Tiered spectator structure - Netball
c.06	Banks - Spectator Viewing
c.07	Scoreboard(s)
c.08	Landscaped perimeter mounding
c.09	Bio Retention Swales
c.10	Perimeter Fencing
c.11	Grass Swale
c.12	Vegetated Swale
c.13	Bank
c.14	Sprinkler Tank
c.15	Pump Room
c.16	Substation
SITE SERVICES INFRASTRUCTURE	
d.01	Lighting - Ground 1
d.02	Lighting - Ground 2
d.03	Lighting - Hockey
d.04	Lighting - Netball
d.05	Road Reserve power poles
CLUBHOUSE - UPPER LEVEL	
e.01	Club
e.02	Bar
e.03	Bar - Keg Room
e.04	Bar - Store
e.05	Bar - Post Mix
e.06	Kitchen
e.07	Kitchen - Cool Room
e.08	Kitchen - Freezer
e.09	Kitchen - Dry Store
e.10	Kitchen - Glass Wash
e.11	Kitchen - Ice Maker
e.12	Kitchen - Dishwash
e.13	Kitchen - Plant
e.14	Canteen
e.15	Canteen - Stores
e.16	Amenities - Club - Male
e.17	Amenities - Club - Female
e.18	Amenities - Club - Accessible
e.19	Amenities - Precinct - Male
e.20	Amenities - Precinct - Female
e.21	Amenities - Precinct - Accessible
e.22	Managers Office
e.23	IT Cupboard
e.24	Club Stores - Netball
e.25	Licensed Gaming Machines
e.26	Main Switch Room
e.27	Refuse and Recycling
e.28	Change Room Ventilation Voids
CLUBHOUSE - LOWER LEVEL	
f.01	Change 1 - Including shower and wc
f.02	Change 2 - Including shower and wc
f.03	Change 3 - Including shower and wc
f.04	Change 4 - Including shower and wc
f.05	Change - Referees
f.06	First Aid Room / Physio
f.07	Cleaners
f.08	Sports and field maintenance
f.09	Club Stores - League
f.10	Club Stores - Hockey
f.11	Hockey plant
f.12	Grease Arrestor



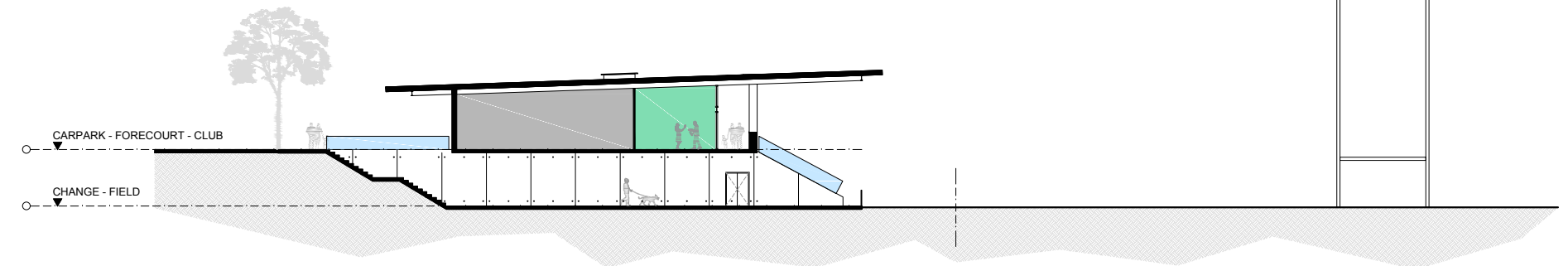
KEY	
SPORTS	
a.01	Rugby League field - Ground 1 - 100 x 68
a.02	Rugby League field - Ground 2 - 100 x 68
a.03	Hockey - Wet Synthetic - 91.4 x 55
a.04	Netball Court array - 30 x 15.5 ea
a.05	Play
a.06	Fitness Stations - perimeter course
CIRCULATION	
b.01	Vehicular Entry off O'Connell Road
b.02	Road Reserve Cull-der-sac
b.03	Entry (Ticketing Option)
b.04	Parking - Primary
b.05	Parking - Accessible
b.06	Parking - Secondary
b.07	Parking - Overflow
b.08	Parking - Kiss + Drop (Dump + Run)
b.09	Ambulance - access routes
b.10	Ambulance - gated access
b.11	Pedestrian/cyclist access points
b.12	Pedestrian/cyclist on-site peripheral circulation
b.13	Ground & lower level access - race
b.14	Ground & lower level access - stairs
b.15	Ground & lower level access - 1:20 ramping
SITE	
c.01	Forecourt
c.02	Sundeck / BBQ
c.03	Tiered seating - Ground 1 - League
c.04	Tiered spectator structure - Hockey
c.05	Tiered spectator structure - Netball
c.06	Banks - Spectator Viewing
c.07	Scoreboard(s)
c.08	Landscaped perimeter mounding
c.09	Bio Retention Swales
c.10	Perimeter Fencing
c.11	Grass Swale
c.12	Vegetated Swale
c.13	Bank
c.14	Sprinkler Tank
c.15	Pump Room
c.16	Substation
SITE SERVICES INFRASTRUCTURE	
d.01	Lighting - Ground 1
d.02	Lighting - Ground 2
d.03	Lighting - Hockey
d.04	Lighting - Netball
d.05	Road Reserve power poles
CLUBHOUSE - UPPER LEVEL	
e.01	Club
e.02	Bar
e.03	Bar - Keg Room
e.04	Bar - Store
e.05	Bar - Post Mix
e.06	Kitchen
e.07	Kitchen - Cool Room
e.08	Kitchen - Freezer
e.09	Kitchen - Dry Store
e.10	Kitchen - Glass Wash
e.11	Kitchen - Ice Maker
e.12	Kitchen - Dishwash
e.13	Kitchen - Plant
e.14	Canteen
e.15	Canteen - Stores
e.16	Amenities - Club - Male
e.17	Amenities - Club - Female
e.18	Amenities - Club - Accessible
e.19	Amenities - Precinct - Male
e.20	Amenities - Precinct - Female
e.21	Amenities - Precinct - Accessible
e.22	Managers Office
e.23	IT Cupboard
e.24	Club Stores - Netball
e.25	Licensed Gaming Machines
e.26	Main Switch Room
e.27	Refuse and Recycling
e.28	Change Room Ventilation Voids
CLUBHOUSE - LOWER LEVEL	
f.01	Change 1 - Including shower and wc
f.02	Change 2 - Including shower and wc
f.03	Change 3 - Including shower and wc
f.04	Change 4 - Including shower and wc
f.05	Change - Referees
f.06	First Aid Room / Physio
f.07	Cleaners
f.08	Sports and field maintenance
f.09	Club Stores - League
f.10	Club Stores - Hockey
f.11	Hockey plant
f.12	Grease Arrestor



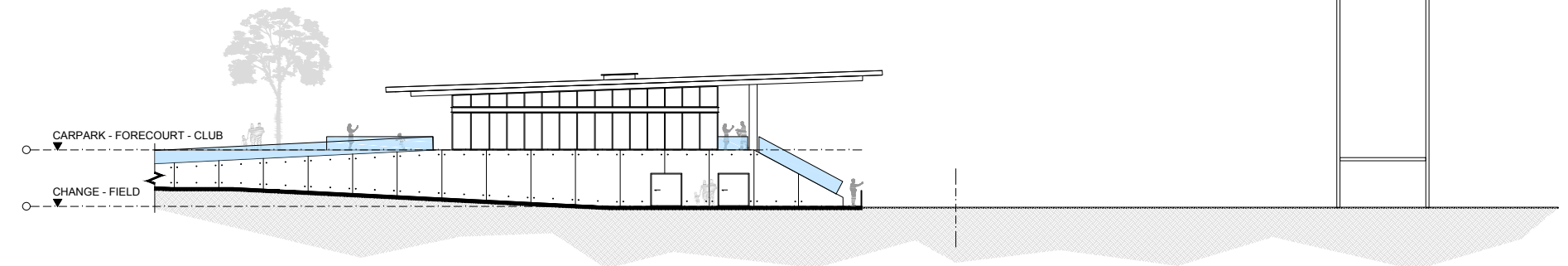
A



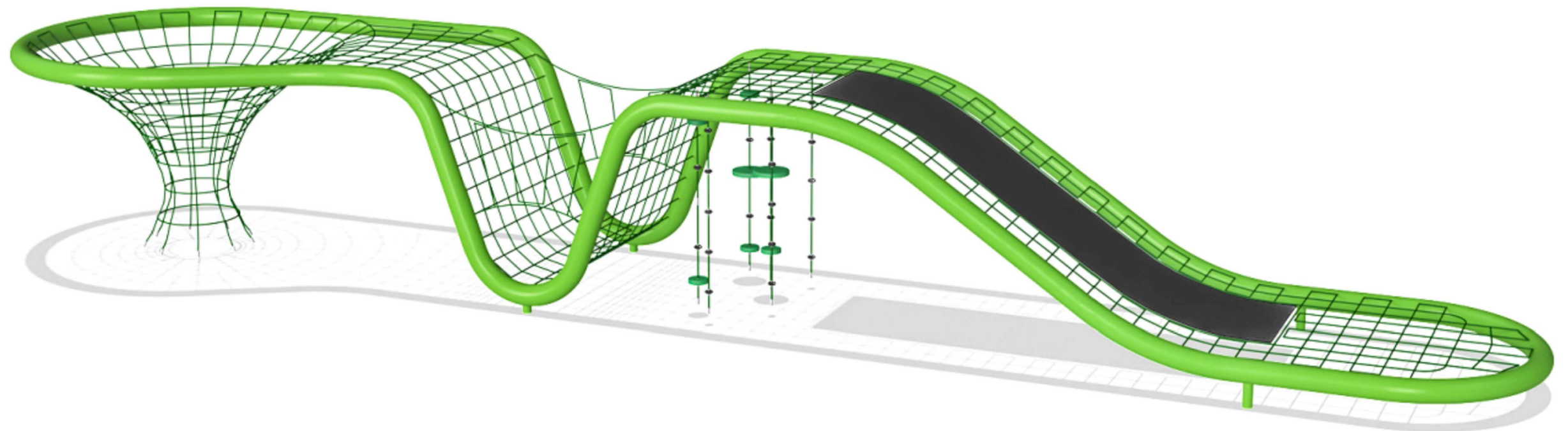
B

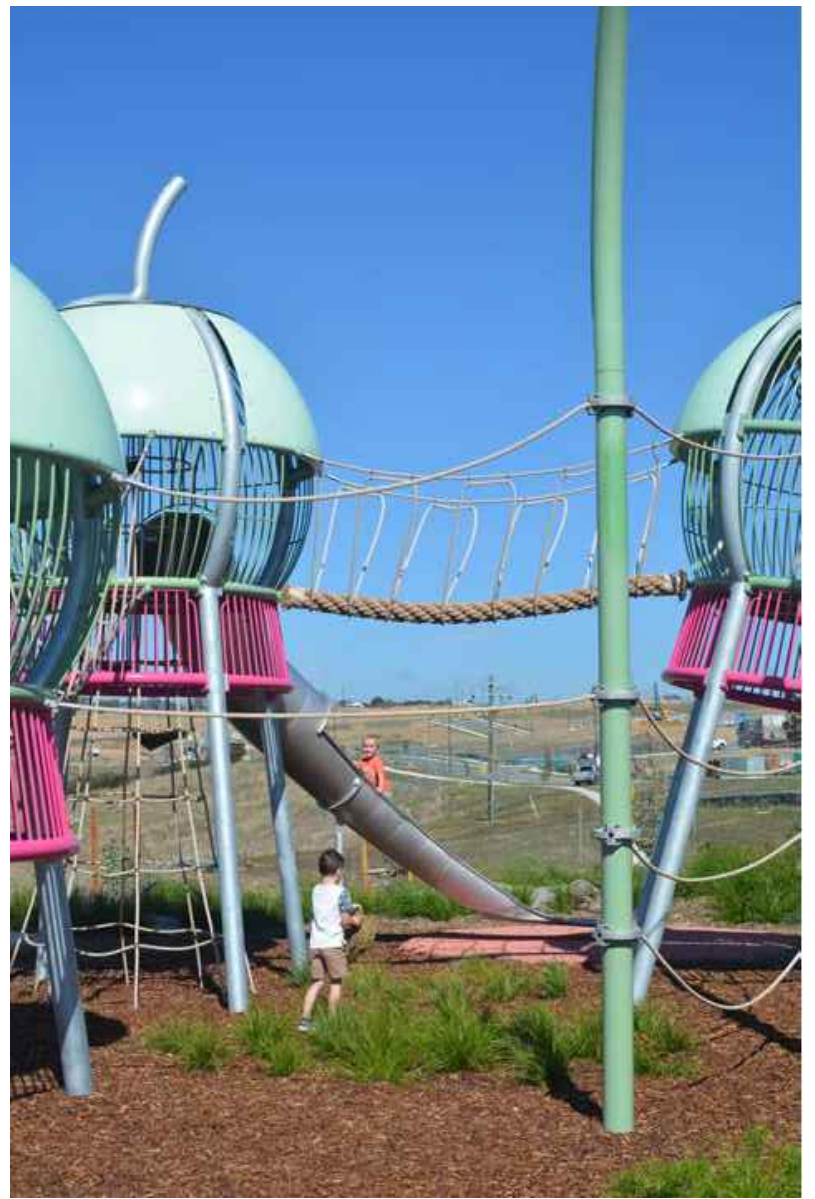
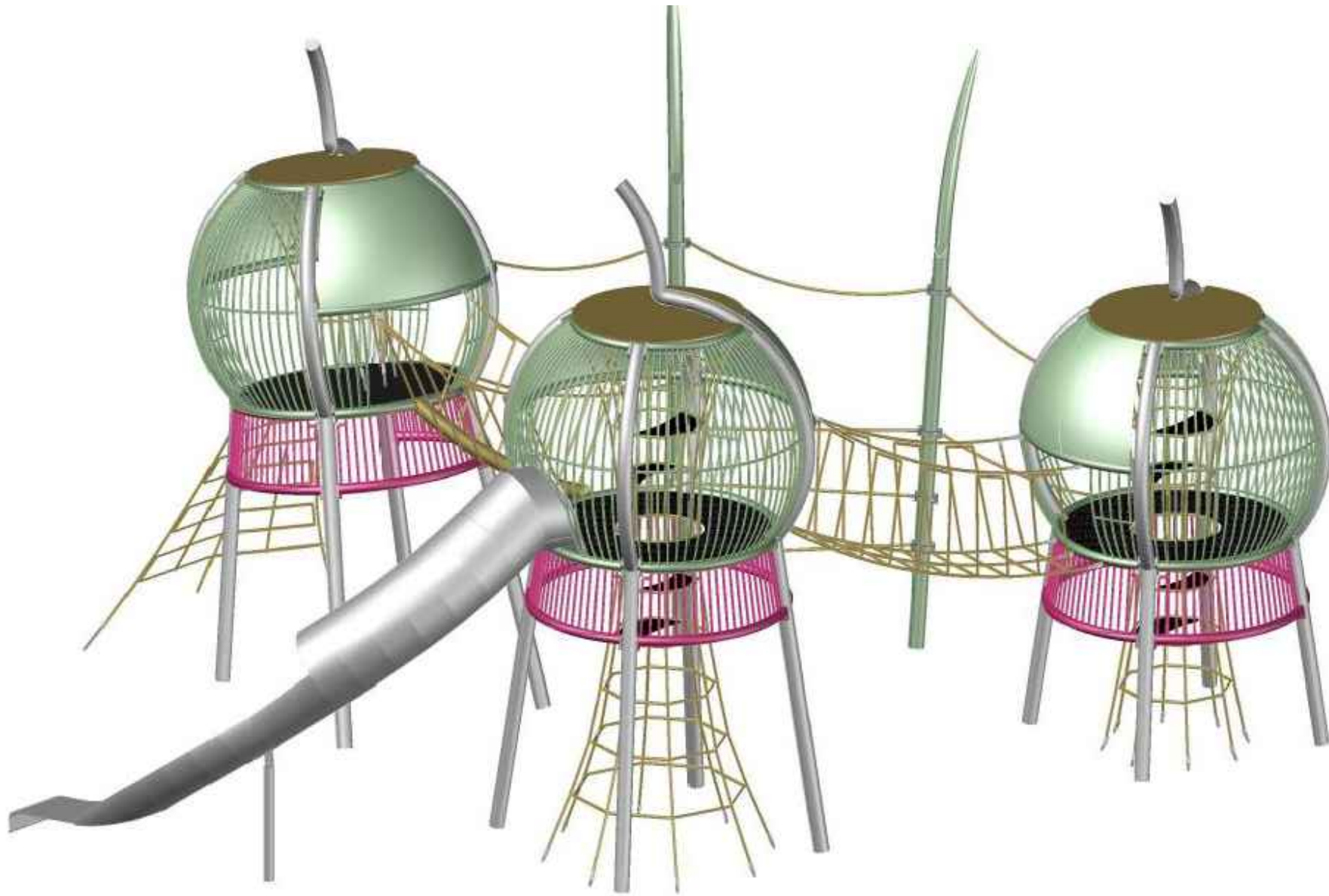
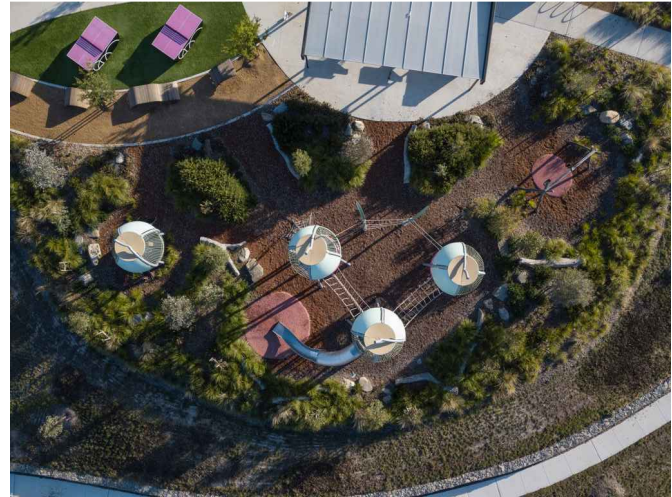


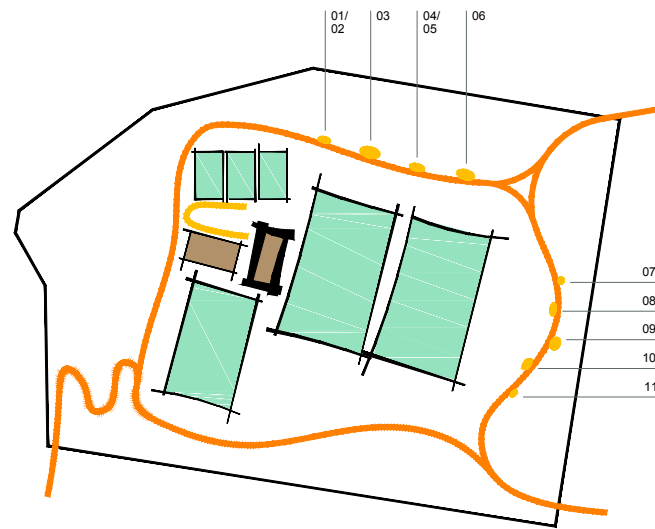
C



D







01
STEP



02
PULL UP STATION



03
SUSPENSION TRAINER,
PARALLEL BARS &
MAGNETIC BELL LINK



04
DECLINE PRESS



05
INCLINE PRESS



08
PULL UP BARS,
PARALLEL BARS &
MULTI NET LINK



07
MULTI NET



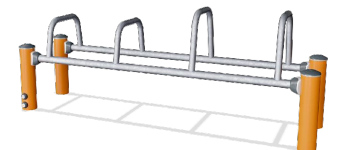
09
OVERHEAD LADDER



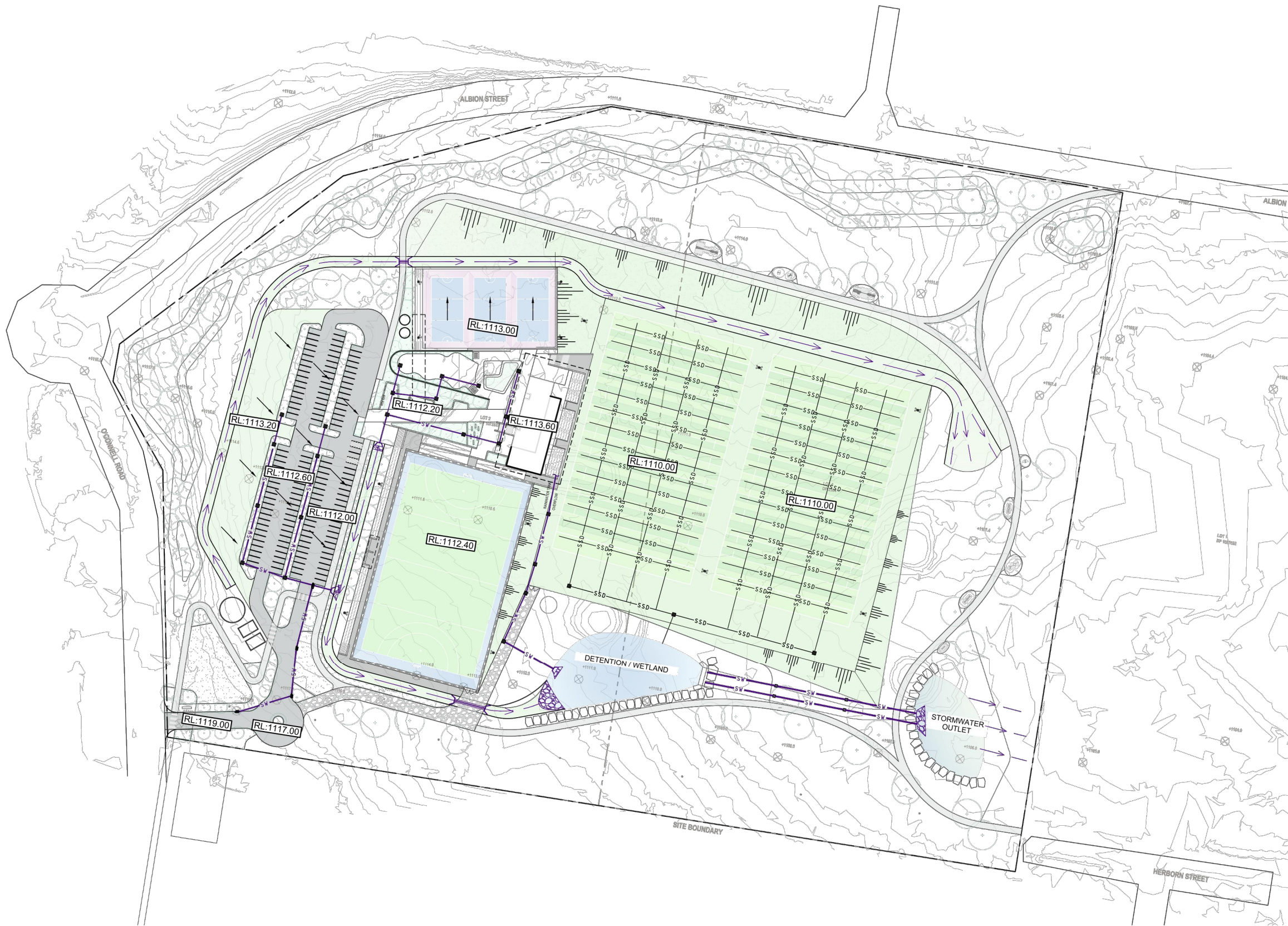
09
COMBINATION



10
DOUBLE TURBO CHALLENGE



11
DIP BENCH



CIVIL LEGEND

PROPOSED STORMWATER PIPE
RCP CLASS 2'

STORMWATER PITS

BOX CULVERT CROSSING WITH HEADWALL

RIP-RAP SCOUR PROTECTION

GRASS DRAINAGE SWALE
AND DIRECTION OF FLOW

FLOW DIRECTION

GRASS BATTER
NOMINAL MAX SLOPE 1:4

PAVEMENT TYPE 1
CARPARK / ROAD PAVEMENT (AC)
DESIGN = 10⁶ ESA, CBR = 3% (ASSUMED)

DESIGN FINISHED SURFACE LEVEL

40mm THICKNESS ASPHALTIC
CONCRETE (AC14)

7mm PRIMER SEAL

150mm COMPACTED BASECOURSE
(DGB20)

150mm COMPACTED SUB-BASE
(DGS40)

COMPACTED SUBGRADE 98% SMDD

PAVEMENT TYPE 2
CONCRETE FOOTPATH PAVEMENT

DESIGN FINISHED SURFACE LEVEL

100mm THICK CONCRETE (f_c = 20MPa)
WITH SL72 MESH PLACED CENTRALLY

20mm SAND BEDDING

COMPACTED SUBGRADE 95% SMDD

PAVEMENT TYPE 3
UNSEALED MAINTENANCE TRACK PAVEMENT
NOTE: PROVIDE 4% CROSSFALL TO ROAD SURFACE

DESIGN FINISHED SURFACE LEVEL

100mm NATURAL GRAVEL
MAXIMUM PARTICLE SIZE 40mm

150mm SUB-BASE DGS40

COMPACTED SUBGRADE 98% SMDD

crawford

architects

Oberon Sports Complex | Civil | Stormwater

Drawing Number

Issue

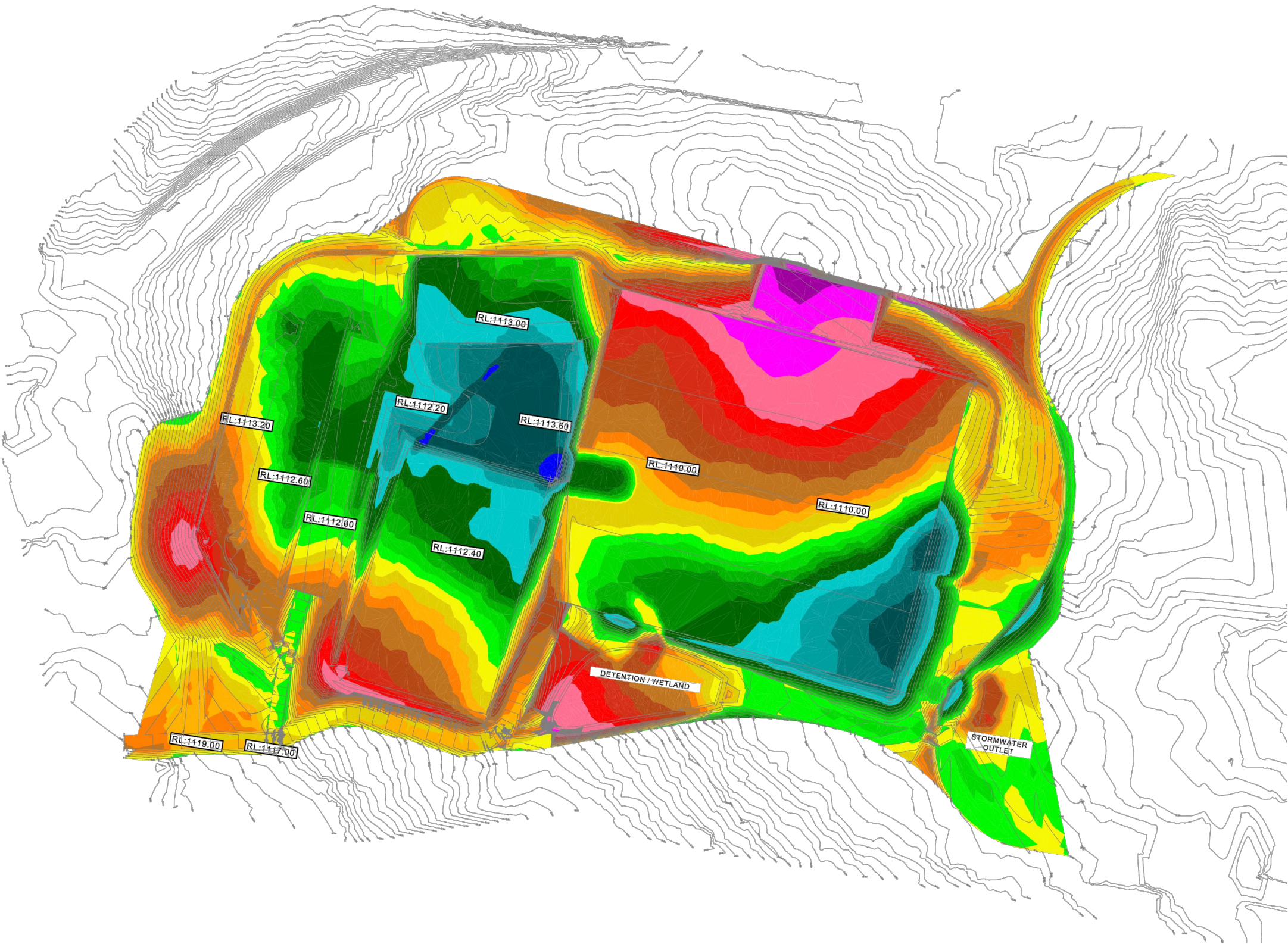
Date

12

C


18.09.26


CUT & FILL SUMMARY	
TOTAL CUT:	-78062m³
TOTAL FILL:	42867m³
BALANCE:	-35195m³ (CUT)
NOTES:	
1. ASSUMES 300mm THICK AC PAVEMENT	
2. ASSUMES 150mm THICK NETBALL COURT SLAB AND OTHER CONCRETE / PAVED AREAS	
3. ASSUMES 150mm THICK SYNTHETIC HOCKEY FIELD	
4. ASSUMES 150mm THICK TURFING AND GROWING MEDIA LAYER FOR RUGBY LEAGUE FIELD	

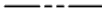


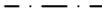
LEGEND	
CUT BETWEEN 8.0m AND 6.5m	
CUT BETWEEN 6.5m AND 5.0m	
CUT BETWEEN 5.0m AND 4.0m	
CUT BETWEEN 4.0m AND 3.0m	
CUT BETWEEN 3.0m AND 2.5m	
CUT BETWEEN 2.5m AND 2.0m	
CUT BETWEEN 2.0m AND 1.5m	
CUT BETWEEN 1.5m AND 1.0m	
CUT BETWEEN 1.0m AND 0.75m	
CUT BETWEEN 0.75m AND 0.50m	
CUT BETWEEN 0.50m AND 0.25m	
CUT BETWEEN 0.25m AND 0.0m	
FILL BETWEEN 0.0m AND 0.25m	
FILL BETWEEN 0.25m AND 0.5m	
FILL BETWEEN 0.5m AND 0.75m	
FILL BETWEEN 0.75m AND 1.0m	
FILL BETWEEN 1.0m AND 1.5m	
FILL BETWEEN 1.5m AND 2.0m	
FILL BETWEEN 2.0m AND 2.5m	
FILL BETWEEN 2.5m AND 3.0m	
FILL BETWEEN 3.0m AND 4.0m	
FILL BETWEEN 4.0m AND 5.0m	
FILL BETWEEN 5.0m AND 6.5m	
FILL BETWEEN 6.5m AND 8.0m	


LEGEND

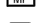
- 


PAD MOUNTED KIOSK SUBSTATION
- 


UNDERGROUND ELECTRICAL CONDUIT
- 


UNDERGROUND COMMUNICATIONS CONDUIT
- 


ESSENTIAL ENERGY HV AERIAL CABLE
- 

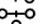
MAIN SWITCHBOARD
- 

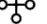
METER PANEL
- 

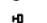
PIT
- 


E - ELECTRICAL (MIN. 600 x 300 x 600 DEEP)
- 

C - COMMUNICATIONS (MIN. 600 x 300 x 600 DEEP)
- 

T - TELSTRA (BY TELSTRA)
- 

COMMUNICATION CABINET
- 

S - SPORTS LIGHTING MULTI HEAD
- 

R - ROADWAY LIGHTING, SINGLE AND MULTI HEAD
- 

P - PEDESTRIAN PATHWAY LIGHTING

- NOTES:
- ALL DIMENSIONS ARE INTERNAL CLEAR
 - NO OTHER SERVICES (MECH DUCTS/CABLING, HYD PIPEWORK ETC) TO BE INSTALLED OR PASS THROUGH ELECTRICAL AND COMMUNICATION ROOMS AND CUPBOARDS

SPORTS LIGHTING POLES AND FLOOD LIGHTS

- HEIGHT SUBJECT TO SPORTS CODE ILLUMINATION LEVELS REQUIRED AS 2560.2.4 AND NETBALL AUSTRALIA NATIONAL FACILITIES POLICY
- OBERON COUNCIL TO ADVISE LEVEL OF COMPETITION FOR DETERMINATION OF ILLUMINATION LEVELS
- LOCATION SUBJECT TO SPORTS CODE SETBACK DISTANCES FROM PLAYING FIELDS
- TYPICALLY 20M HEIGHT
- MULTI-HEAD SINGLE/DOUBLE SIDED

CARPARK LIGHTING POLES AND LIGHTS

- POLES GENERALLY 3,500MM
- GENERAL PARKING SPACE ILLUMINATION LEVELS OF AS/NZS 1158.3.1 CATEGORY 11A, B OR C
- DISABLED PARKING TO ILLUMINATION LEVELS OF AS/NZS 1158.3.1 CATEGORY 12
- OBERON COUNCIL TO ADVISE CATEGORIES FOR DETERMINATION OF ILLUMINATION LEVELS

PAD MOUNTED KIOSK SUBSTATION:

- LOCATION AND REQUIREMENTS TBC WITH ESSENTIAL ENERGY/LEVEL 3 ASP DESIGNER
- EASEMENT OF 5,350 X 7,170 (TBC) TO BE CREATED
- ACCESS FOR HEAVY ARTICULATE VEHICLE
- LEVEL ACCESS, SURROUNDING AREA NO GREATER THAN 1:3 GRADIENT
- NO SERVICES THROUGH, ABOVE, BELOW
- NO STRUCTURAL ELEMENTS WITHIN EASEMENT
- NO STRUCTURE ABOVE EASEMENT
- ABOVE 1:100YR FLOOD LEVEL
- NO BUILDING OPENINGS WITHIN 6,000MM OF KIOSK HOUSING
- STRUCTURAL ELEMENTS WITHIN 3,000MM OF KIOSK HOUSING TO BE 3 HOUR FIRE RATED
- NO METALLIC FENCING AND METAL CLAD BUILDINGS WITHIN 4,000MM OF EASEMENT

ESSENTIAL ENERGY 33/11KV AERIAL AND POLES (TYPICAL):

- PROPOSED SUPPLY POLE TO BE CONFIRMED WITH ESSENTIAL ENERGY
- CLEARANCE REQUIREMENTS OVER VEHICULAR ROAD TO BE REVIEWED
- LIGHT POLE UNDER AERIAL CABLE TO BE REVIEWED* POLE LOCATIONS TO BE REVIEWED AGAINST PROPOSED ACCESS ROADS
- HV CABLE ROUTE WITHIN SITE SUBJECT TO ESSENTIAL ENERGY REQUIREMENTS
- RIGHT OF WAY AND EASEMENT REQUIRED OVER HV CABLE ROUTE

TELSTRA:

- PIT LOCATION TO BE CONFIRMED WITH TELSTRA/SURVEY
- LINE REQUIRED TO BE ADVISED BY OBERON COUNCIL

ROADWAY LIGHTING POLES AND LIGHTS

- POLES GENERALLY 7,500MM
- ILLUMINATION LEVELS OF AS/NZS 1158.3.1 CATEGORY 3, 4 OR 5
- OBERON COUNCIL TO ADVISE CATEGORIES FOR DETERMINATION OF ILLUMINATION LEVELS

SPORTS LIGHTING POLES AND FLOOD LIGHTS

- HEIGHT SUBJECT TO SPORTS CODE ILLUMINATION LEVELS REQUIRED AS 2560.2.3
- OBERON COUNCIL TO ADVISE LEVEL OF COMPETITION FOR DETERMINATION OF ILLUMINATION LEVELS
- LOCATION SUBJECT TO SPORTS CODE SETBACK DISTANCES FROM PLAYING FIELDS
- TYPICALLY 20M HEIGHT
- MULTI-HEAD SINGLE/DOUBLE SIDED

METER PANEL:

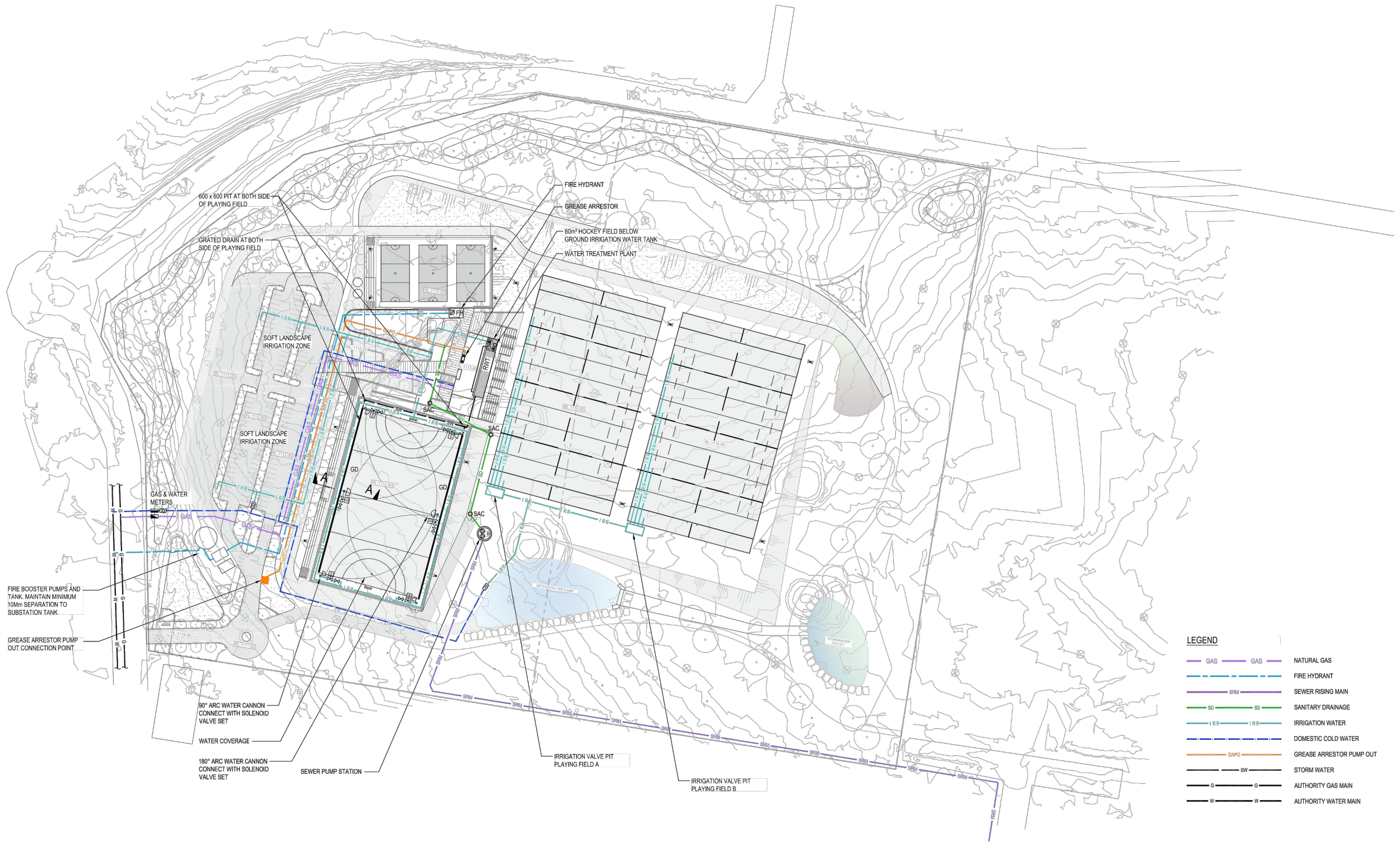
- 700(W) X 400(D) X 700(H)
- WALL MOUNTED (SURFACE OR RECESSED)
- ACCESSIBLE 24/7 FOR ELECTRICAL DISTRIBUTOR

MAIN DISTRIBUTION BOARD:

- 2,000(W) X 400(D) X 2,100(H)
- 1 HR FIRE RATED CUPBOARD IF IN PATH OF EGRESS

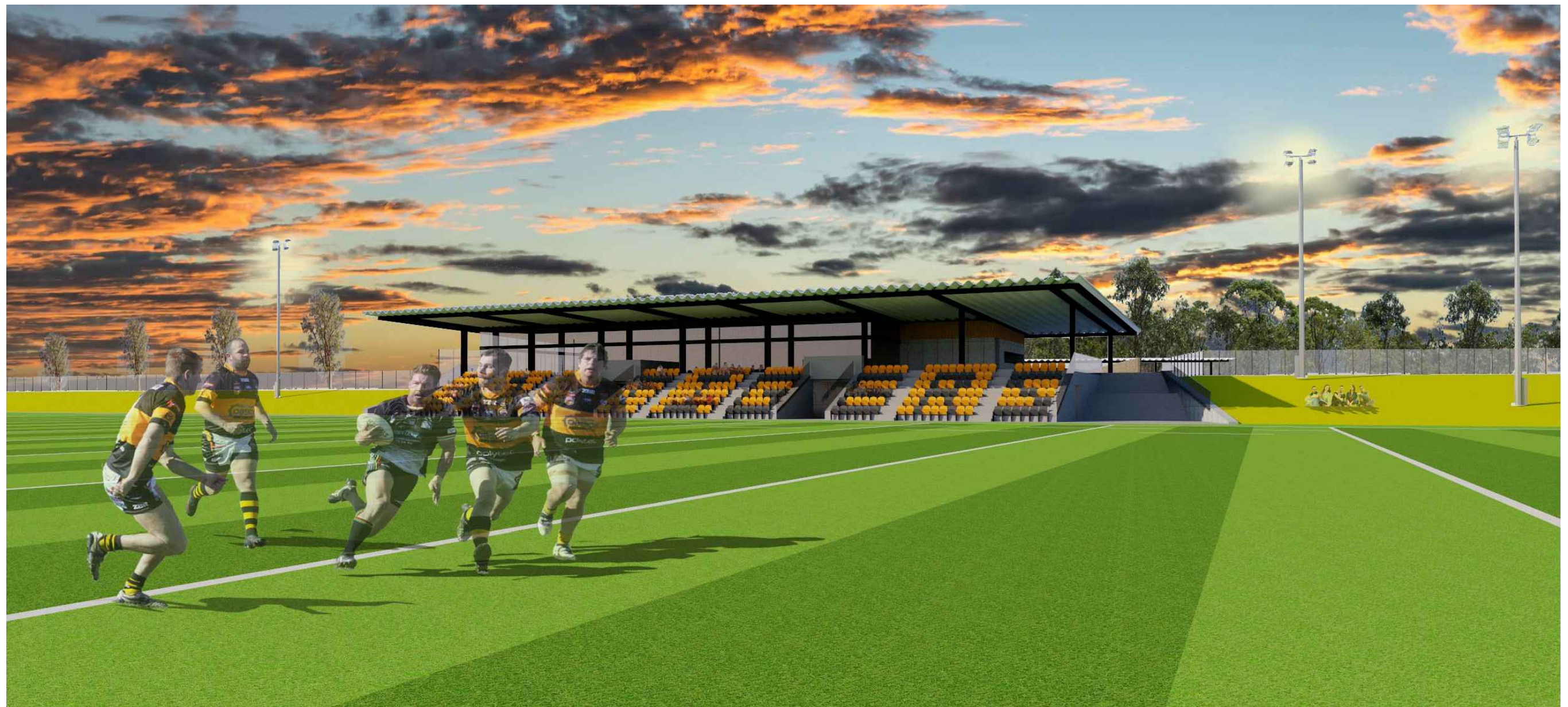
COMMS PANEL:

- 700(W) X 700(D) X 900(H)
- WALL MOUNTED
- REQUIREMENTS TO BE ADVISED BY OBERON COUNCIL



LEGEND

— GAS —	— GAS —	— NATURAL GAS —
— FIRE HYDRANT —	— FIRE HYDRANT —	— FIRE HYDRANT —
— SRM —	— SRM —	— SEWER RISING MAIN —
— SD —	— SD —	— SANITARY DRAINAGE —
— IRR —	— IRR —	— IRRIGATION WATER —
— DCM —	— DCM —	— DOMESTIC COLD WATER —
— GAO —	— GAO —	— GREASE ARRESTOR PUMP OUT —
— SW —	— SW —	— STORM WATER —
— G —	— G —	— AUTHORITY GAS MAIN —
— W —	— W —	— AUTHORITY WATER MAIN —









crawford
architects

suite 3.01, level 3
80 mount street
north sydney, nsw, 2060

t 02 9660 3644

Oberon Sports Complex

